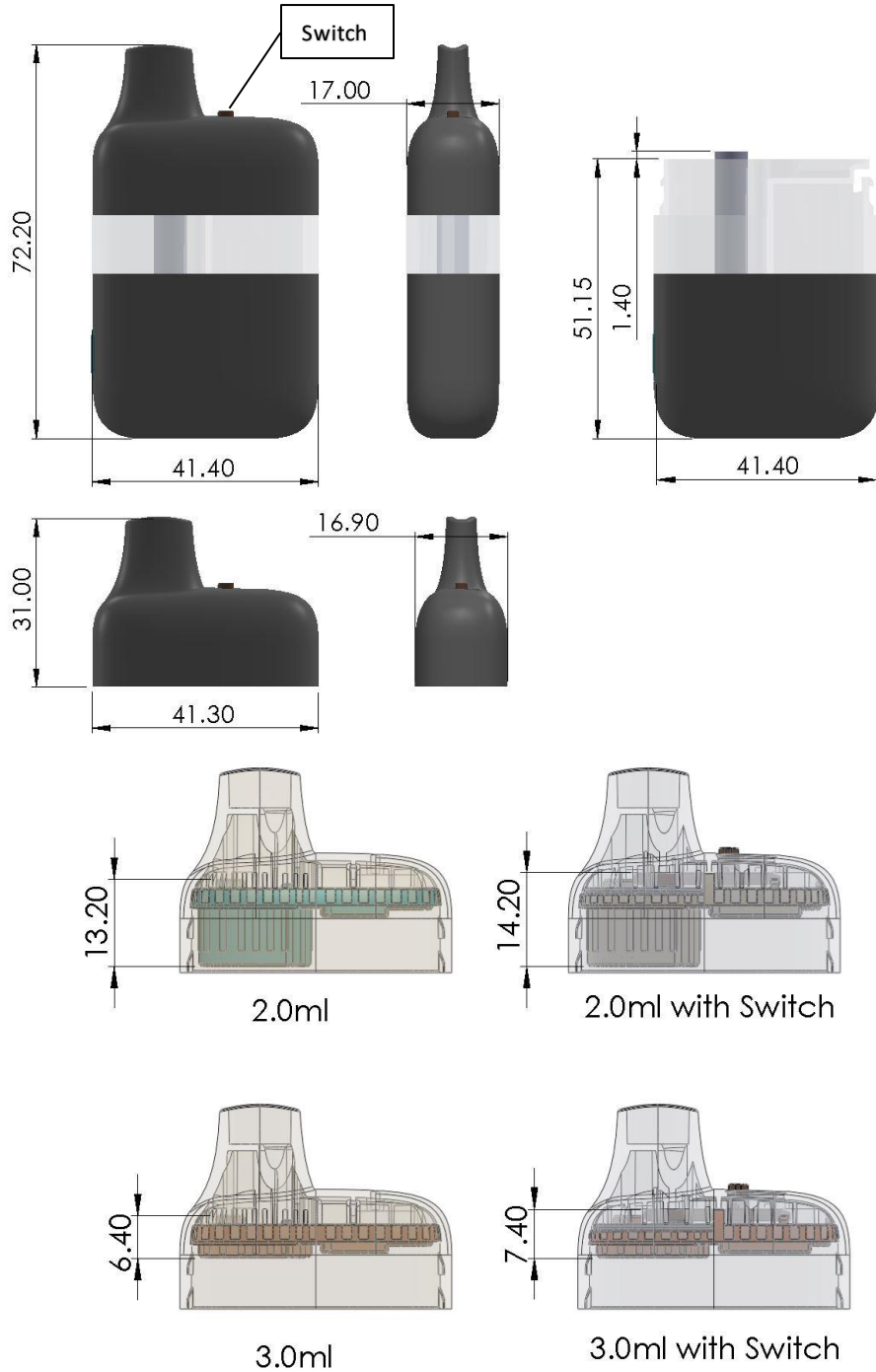

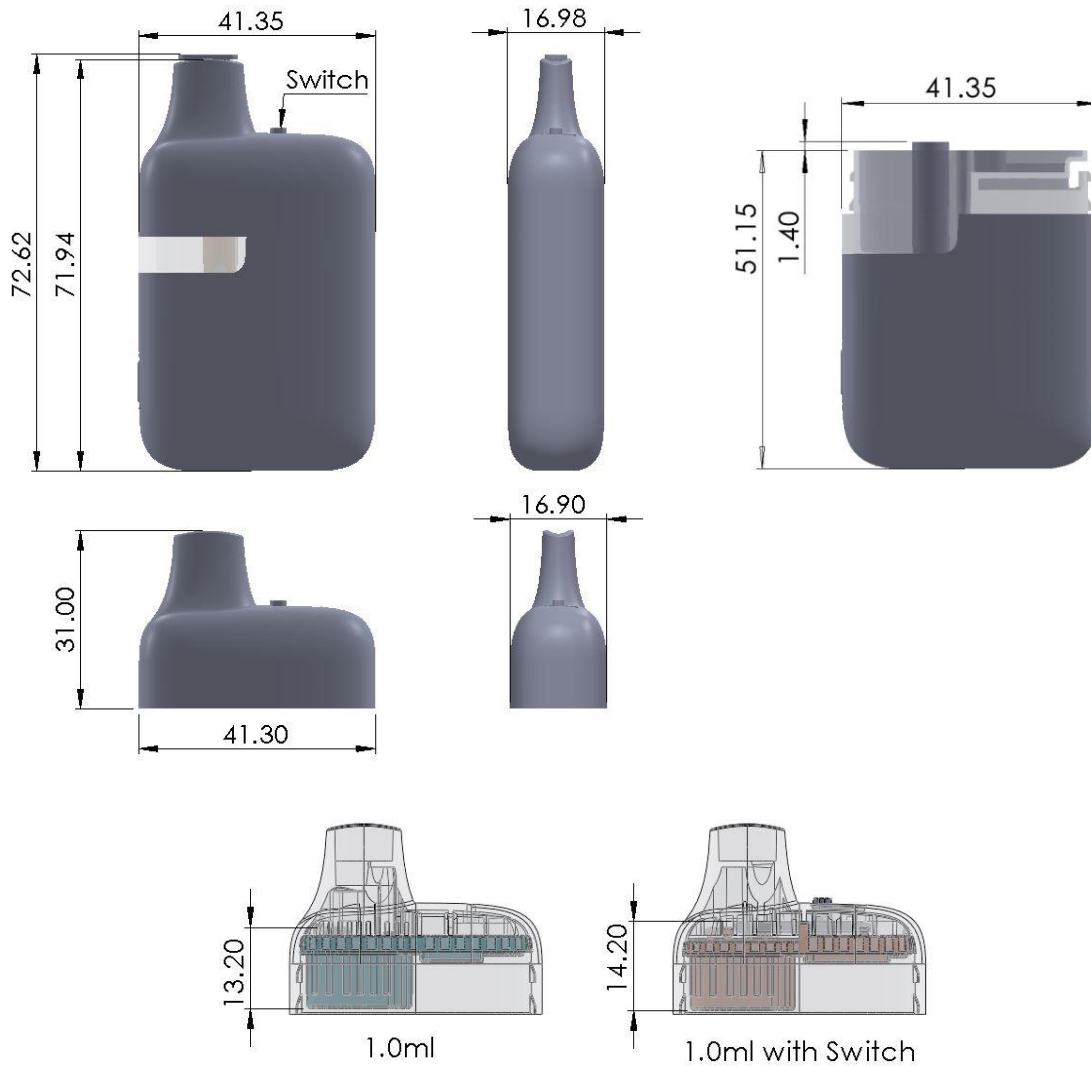
	DOCUMENT NO:	CDS-LX392a-9nnXXX-EVO-X	VER:	1.3
	Tank			EFFECTIVE DATE: See ECO
APPROVAL:	ECO- 375	Jupiter PN(s):	Multiple	PAGE 1 OF 9



Tank 2.0/3.0ml

	DOCUMENT NO:	CDS-LX392a-9nnXXX-EVO-X	VER:	1.3
	Tank			EFFECTIVE DATE:
APPROVAL:	ECO- 375	Jupiter PN(s):	Multiple	PAGE 2 OF 9




Tank 1.0ml

*All dimensions in mm


Features:

- Aroma seal-off and anti-leakage switch (optional)
- Child resistant lock
- 3 re-programmable voltage settings (2.4V/2.8V/3.2V)
- 10-second preheat
- Compatible with all types of cannabis oils
- Clog-free dual air vents


	DOCUMENT NO:	CDS-LX392a-9nnXXXX-EVO-X	VER:	1.3
	Tank			EFFECTIVE DATE: See ECO
APPROVAL:	ECO- 375	Jupiter PN(s):	Multiple	PAGE 3 OF 9

- Clean vapor and enhanced safety via isolated airway
- Inhale activated
- USB-C Charging
- Available for customization

Specifications				
Internal Volume	Gross	1.0ml	2.0ml	3.0ml
	Max. fill volume	1.0ml	2.0ml	3.0ml
Weight, empty with Mouthpiece	1ml (No switch): 26.8g 1ml (Switch): 27.5g 2ml (No switch): 29.5g 2ml (Switch): 31g 3ml (No switch): 28.5g 3ml (Switch): 30g			
Atomizer Resistance	1.4Ω, Standard.			
Pre-heat	10 s			
Fluid Inlet Hole size	φ2.0mm, Standard. See part number legend for other options.			
Number of inlet holes	4			
Recommended Viscosity Range	1,000 – 2,000,000 cPs @ 25°C [77°F] Please see viscosity recommendation table for more details.			
Draw Resistance	0.5-1.0 kPa			
Voltage (reprogrammable)	Preheat – 1.8Vrms <ul style="list-style-type: none"> • Setting 1 – 2.4Vrms, • Setting 2 – 2.8Vrms, • Setting 3 – 3.2Vrms 	Note: Voltages can be re-programmable via the CCELL Voltage tuner SKU: AC39925-63200		
Recommended Closure force	22.5 – 45 lbf (100-200N)			
Wetted Materials	Housing		Engineering thermoplastic	
	Reservoir		Engineering thermoplastic	
	Mouthpiece		Engineering thermoplastic	

	DOCUMENT NO:	CDS-LX392a-9nnXXX-EVO-X	VER:	1.3
	Tank			EFFECTIVE DATE: See ECO
APPROVAL:	ECO- 375	Jupiter PN(s):	Multiple	PAGE 4 OF 9

	Airway tube	Stainless steel
	Heating element	Nichrome
	Wick	CCELL EVO Max
	Atomizer retaining wrap	Cellulose
	Seals	Silicone
Battery Cell Capacity	2ml/3ml: 280 mAh 1ml: 200 mAh	
Max Current	3A	
Charging	USB-C, Rechargeable	
Branding Options	Available with MOQ	
Operating Temperature and Humidity	<ul style="list-style-type: none"> ○ Charging Temperature: 10°C to 45°C [50°F to 113°F] ○ Working Temperature: 0°C to 60°C [32°F to 140°F] ○ Operating Humidity: 35% to 70% 	
Storage Temperature and Humidity	<ul style="list-style-type: none"> ○ Storage Temperature: 18°C – 28°C [64.4°F – 82.4°F] ○ Storage Humidity: 35% to 70% 	
Safety Certifications	<ul style="list-style-type: none"> ○ RoHS ○ CE ○ FCC ○ IC 	

	DOCUMENT NO:	CDS-LX392a-9nnXXXX-EVO-X	VER:	1.3
	Tank			EFFECTIVE DATE:
APPROVAL:	ECO- 375	Jupiter PN(s):	Multiple	PAGE 5 OF 9

Shipping conditions	<p>Transport temperature: $23 \pm 5^{\circ}\text{C}$</p> <p>Relative humidity: 35%~70%</p> <p>Atmospheric pressure: 86kpa~106kpa</p> <p>Ships in locked state (child safety lock) and switched off (anti-clogging switch)</p> <p>The means of transport must be clean and hygienic, and the products should be handled with care and stacked according to maximum stacking rules. Do not mix with toxic or odorous items during transportation. The product should be protected from rain, moisture, sun exposure, and severe vibration or rough handling during transportation. If the Injection cartridge needs to be transported across the region, it is recommended that: ① horizontal storage, ② sealed packaging, such as candy bags, capsules, etc. ③</p> <p>The air pressure during transportation was between 86kpa and 106kpa</p>
---------------------	---


Part Number Legend: LX392a-9nnXXXX-EVO-X-YYY-ZZZ-F			
<ul style="list-style-type: none"> • a -> mAh <ul style="list-style-type: none"> ○ 0 for 200mAh (1ml) ○ 8 for 280mAh (2/3ml) 	<ul style="list-style-type: none"> • nn->Filling volume <ul style="list-style-type: none"> ○ 00 for 1ml ○ 20 for 2ml ○ 30 for 3ml 	<ul style="list-style-type: none"> • YYY-> Power <ul style="list-style-type: none"> ○ 000 for 1.4ohm 	<ul style="list-style-type: none"> • ZZZ-> Inlet diameter options <ul style="list-style-type: none"> ○ 000 for 2.0mm standard ○ 112 for 1.2mm ○ 016 for 1.6mm
<ul style="list-style-type: none"> • Slide Switch-> <ul style="list-style-type: none"> ○ EVO-X for No switch ○ EVO-X-AC for Slide switch 		<ul style="list-style-type: none"> • F-> Foam Tray <ul style="list-style-type: none"> ○ 125*147mm, 5x3 	
<ul style="list-style-type: none"> • Mouthpiece-> <ul style="list-style-type: none"> ○ LX90nn-9nnXXXX-F 			

Viscosity Recommendation table


	EVO MAX – Standard Airway
Recommended Viscosity	Up to 2,000,000cps
Recommended Oil Type*	Distillate, Live Resin, Live Rosin, Liquid Diamonds

*Highlighted are the optimal oils to be used

Features	
Activation	Breath Actuated

	DOCUMENT NO:	CDS-LX392a-9nnXXX-EVO-X	VER:	1.3
	Tank			EFFECTIVE DATE: See ECO
APPROVAL:	ECO- 375	Jupiter PN(s):	Multiple	PAGE 6 OF 9

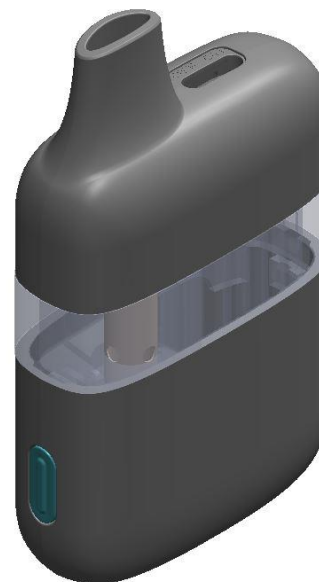
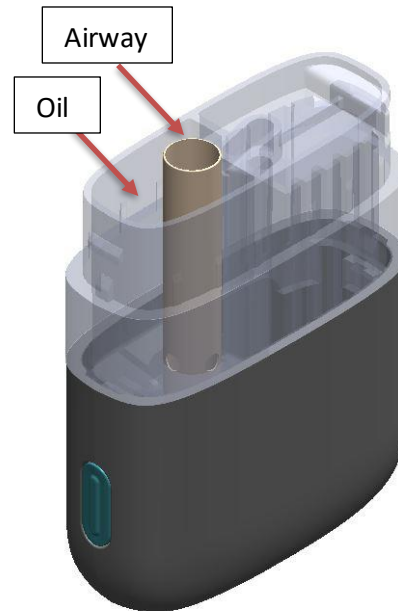
Notification U.I.	LED
Safety lock	<p>Quickly press the key 5 times in a row to unlock / lock LED flashes 5 times and then extinguish.</p> <p>In the locked state, press the button five times in quick succession, the battery is unlocked, and the current gear LED flashes twice.</p> <p>In the locked state, the suction and preheating cannot be performed.</p>
Preheating function	<p>Under the preheating off state, press the key twice quickly to enter the preheating function, under the preheating on state, any key operation can exit the preheating.</p> <p>Under the preheating function, the LED green light breathes and flashes, the preheating lasts for 10S, and then the output stops, and the LED light extinguish.</p> <p>If pumping in the preheated state, the battery exits the preheated state and enters the pumping state</p>
Output power switch guidance	<p>In the unlocked state, long press the key to switch three output gears, and the gears can realize 1-2-3-1 cycle switch.</p> <p>Set the power to first gear, blink green for three times, and then turn off.</p> <p>Set the power to second gear, blink blue for three times, and then turn off.</p> <p>Set the power to third gear, blink red for three times, and then turn off.</p>
Low Power Protection	When the battery level is low (less than $3.3V \pm 0.1V$), the LED red flashes 10 times and turns off.
Short-circuit Protection	When the resistance of loading is less than $0.4\Omega (\pm 0.2)$, the power will turn off. The LED red shines for 2s and turns off.
Over-vaping indication	When any time suctioning lasts for more than 10S, the power will cut off, and the LED red will flash two times then turn off
Li-ion Battery Cells	Jupiter power supplies are not required to be classified as Dangerous Goods when packaged properly for transport by sea, air, or ground due to their small capacity and containment within the device.
Charging features	<p>Connected to the charger, the LED light is in a breathing state and is in a charging state.</p> <p>Remove the charger and turn off the LED at the corresponding gear after blinking for 3 times.</p> <p>When the battery fully charged, LED turn off.</p>
Battery query	<p>Shortly press the button once to query the power</p> <p>Power is more than 10%, less than 40%, red light long bright 2S after extinguishing.</p> <p>Power is more than 40%, less than 70%, blue light long on 2S after extinguishing.</p> <p>The power is greater than 70%, and the green long on 2S after extinguishing.</p>
Cell Containment	Cells are enclosed in rigid plastic housings to protect the battery cell from contact with external elements that may cause damage to the cell under


	DOCUMENT NO:	CDS-LX392a-9nnXXX-EVO-X	VER:	1.3
	Tank			EFFECTIVE DATE:
APPROVAL:	ECO- 375	Jupiter PN(s):	Multiple	PAGE 7 OF 9

normal usage conditions and transportation. Cells are not accessible to the user without permanent damage to the unit.
--

Jupiter Tank filling instructions


1. Insert blunt tip needle between the airway and reservoir. Holding upright, fill oil into space around the airway. The liquid should not be injected into the middle airway.
Note: The syringe and needle may need to be warmed to improve fluid flow
*Do NOT overfill
*Do NOT allow oil to enter airway
2. Press the mouthpiece within one minute after the liquid filling.
*Failure to insert the mouthpiece immediately may cause leakage. It is recommended to insert the mouthpiece in less than 1 minute after filling, but this will change based on oil viscosity.
3. After injection, leave for 30 minutes before smoking.
*Saturation time will be based on oil viscosity
4. If the cartridge/device is to experience a pressure change because of an increase in temperature or a change in elevation, the cartridge/device must be shipped with the MP facing down, allowing for the inlets to be exposed to ambient air.
5. It is recommended to use alcohol with a concentration of less than 50% to wipe or disinfect. Isopropyl alcohol or acidic disinfectant is not allowed.




	DOCUMENT NO:	CDS-LX392a-9nnXXX-EVO-X	VER:	1.3
	Tank			EFFECTIVE DATE:
APPROVAL:	ECO- 375	Jupiter PN(s):	Multiple	PAGE 8 OF 9


- The match between oil and product should be tested and verified before batch injection.

Filling and Assembly Instructions

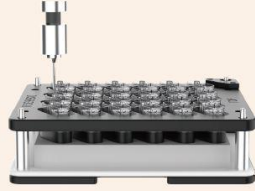





STEP 1
Place the preloaded battery tray onto the baseboard.




STEP 2
Place the deflector over the tray.




STEP 3
Fill oil into the devices' reservoirs.



STEP 4
Place the preloaded mouthpiece tray onto the deflector. Gently tamp down the mouthpieces to ensure they are aligned with the batteries.




STEP 5
Place the gland plate on top.

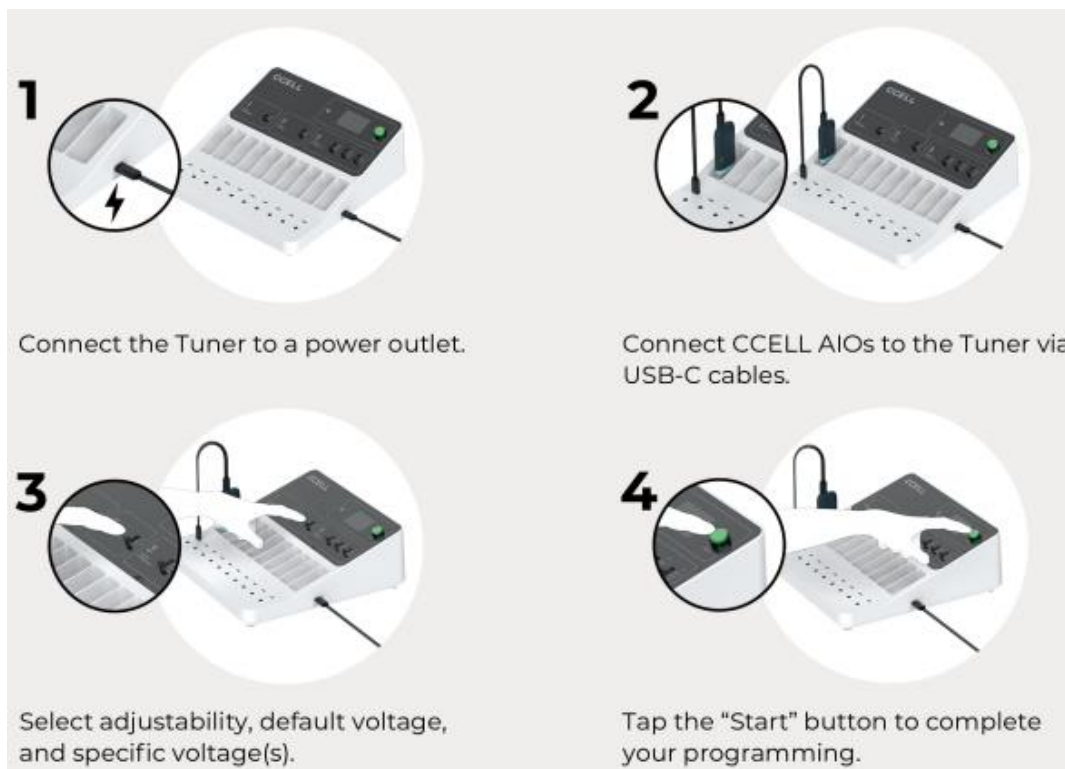


STEP 6
Press with machine to seal off the filled devices.

AIO Voltage Tuning Instructions

- Please note:
 - This Voltage Turner can only be used on AIO devices with this compatibility.
 - It is recommended to first fill and cap the device before starting using the voltage turner.

	DOCUMENT NO:	CDS-LX392a-9nnXXX-EVO-X	VER:	1.3
	Tank			EFFECTIVE DATE: See ECO
APPROVAL:	ECO- 375	Jupiter PN(s):	Multiple	PAGE 9 OF 9



For technical assistance please contact us at: CS@JupiterResearch.com